

# MONTHLY MEMBERSHIP PROGRESS REPORT

District 321B2

Results as of: 5/31/2020

GMT:

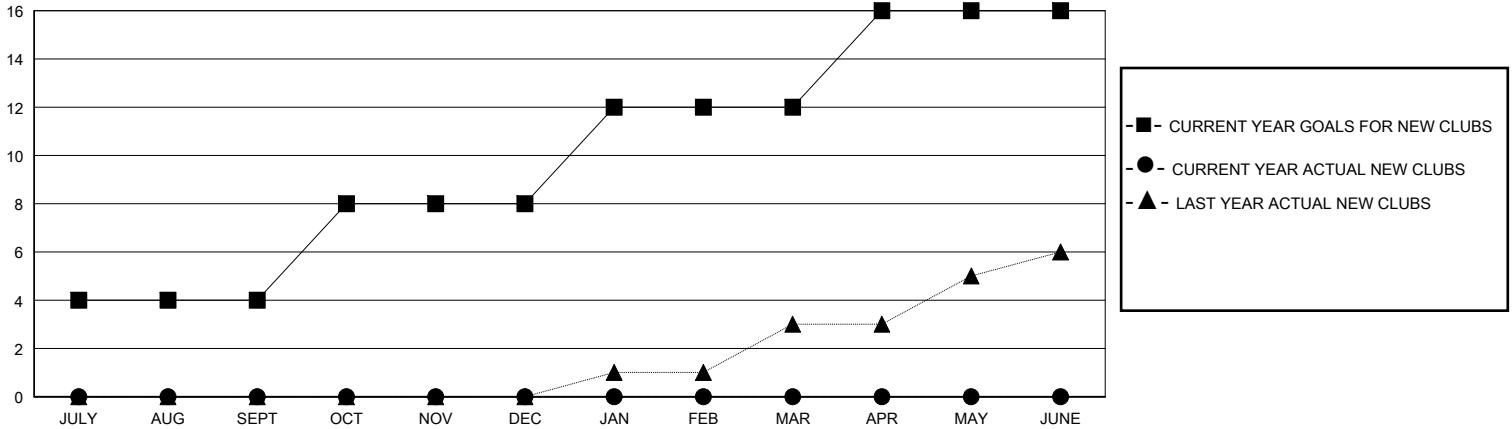
LOCATION INDIA

GMT CA

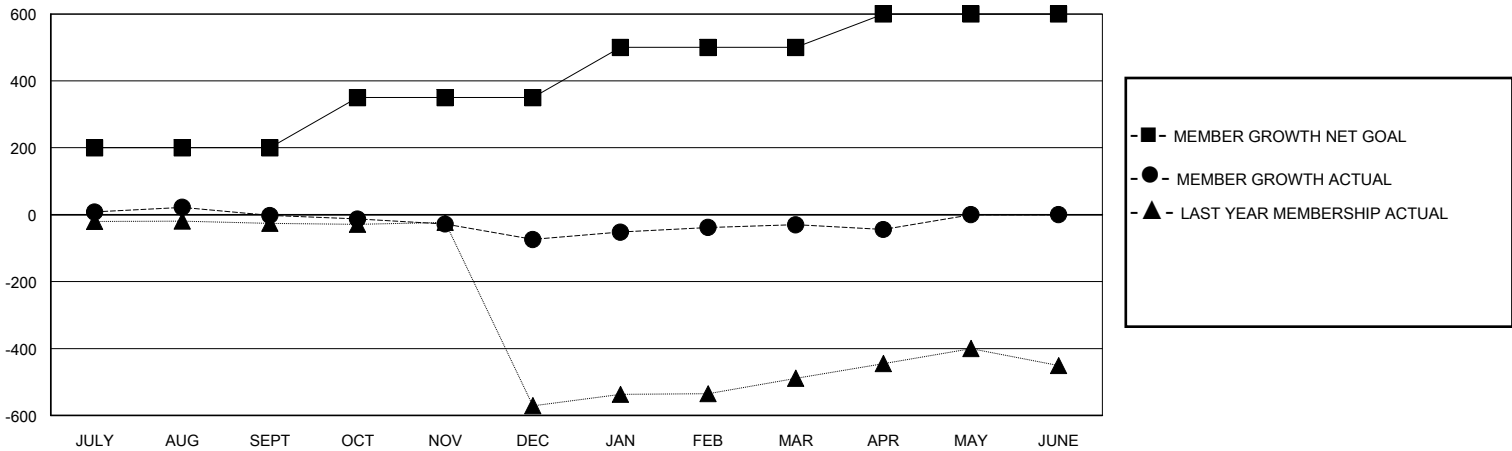
Clubs			
RESULTS FOR 2019-2020			
QUARTER	NEW CLUB GOAL	NEW CLUBS	DROPPED CLUBS
JULY/AUG/SEPT	4	0	0
OCT/NOV/DEC	4	0	3
JAN/FEB/MAR	4	0	0
APR/MAY/JUNE	4	0	0

Members			
RESULTS FOR 2019-2020			
QUARTER	MEMBER GROWTH NET GOAL	MEMBER GROWTH ACTUAL	DROPPED MEMBERS ACTUAL (including transfers)
JULY/AUG/SEPT	200	45	35
OCT/NOV/DEC	150	14	86
JAN/FEB/MAR	150	62	14
APR/MAY/JUNE	100	0	14

GOALS AND ACTUAL NEW CLUBS CUMULATIVE



GOALS AND ACTUAL MEMBERS CUMULATIVE



<b>DROPPED CLUBS: 3</b>	15 CLUBS OF 58 ADDED 1 OR MORE NEW MEMBERS	<b>GENDER DISTRIBUTION</b>	
		MALE 1,138 (62.98%)	FEMALE 669 (37.02%)
<b>DROPPED MEMBERS</b>		<a href="#">CLICK HERE FOR CUMULATIVE MEMBERSHIP DATA</a>	TOTAL FAMILY UNIT MEMBERS 1,202
DECEASED 3	CLUB CANCELLED 49		FAMILY MEMBERS PAYING HALF DUES 682
OTHER 97	TOTAL 149		